



Your Partner in
Digital Radio
Broadcasting

DAB DAB+ DMB Product News

September 2014

D-VAUDAX Ensemble Multiplexer Version 2.0 Preview

Due for release in early 2015, **D-VAUDAX 2.0** features revised hardware and multiplex management software.

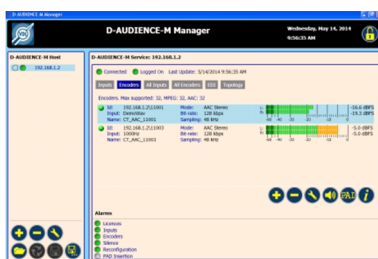
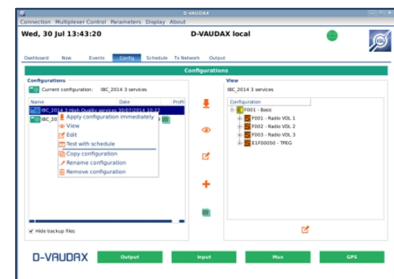
D-VAUDAX 2.0 has been thoroughly revised while retaining an easy-to-use layout. The 64-bit Linux Operating System provides a sound basis for future developments without compromising **D-VAUDAX**'s proven long-term reliability and stability.

The forthcoming multiplexer software release for **D-VAUDAX 2.0** includes a new, interactive Dashboard that provides an instant overview of currently broadcast services, current ensemble configuration, events and output status.

D-VAUDAX supports the latest Service Linking use-cases defined in ETSI TS 103 176, including support for multiple LSNs, as well as support for Journaline® services.

The Service Provider Profile Management option creates one or more virtual Service Multiplexers, enabling each broadcaster to control their allocated capacity without the need for physical service multiplexers.

D-VAUDAX is a highly flexible system and can be extended and varied by plug-in cards and optional software modules.



D-AUDIENCE-M Multi-channel Audio Encoder New 16-Channel Livewire Audio Input option

D-AUDIENCE-M supports up to 16 DAB/DAB+ encoder channels in a single, 2U unit. The Encoders are managed from **D-VAUDAX** Multiplexers and support a choice of 1+1 and spare-pool redundancy configurations.

Audio input choices include:

- Analogue and/or AES/EBU Digital - up to 4 channels
- AES/EBU Digital – up to 16 channels
- Livewire Digital – up to 16 channels

The Encoder's UDP/IP output provides packet-re-send error protection, while EDI output provides a choice of FEC or packet-re-send error protection.

An integral PAD Inserter provides an efficient and cost-effective solution DLS and Slideshow insertion where Encoders are located at Radio Station Sites.

D-AUDIENCE-M runs under Windows 7 and features redundant power supplies along with hot-swap, mirrored hard disk drives.