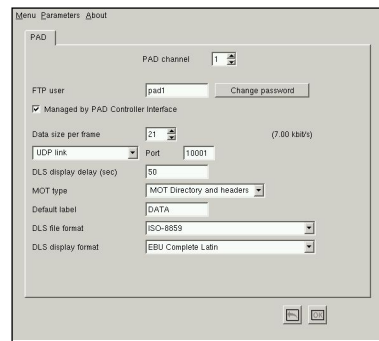
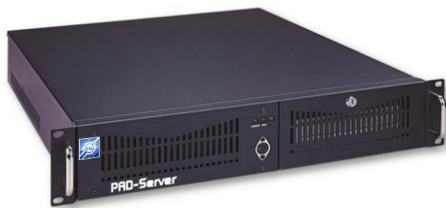


# PAD-Server



## PAD Insertion for VDL Audio Encoders



The VDL PAD-Server® enables insertion of Programme Associated Data (PAD) directly to Digital Audio Broadcasting (DAB and DAB+) Audio Encoders.

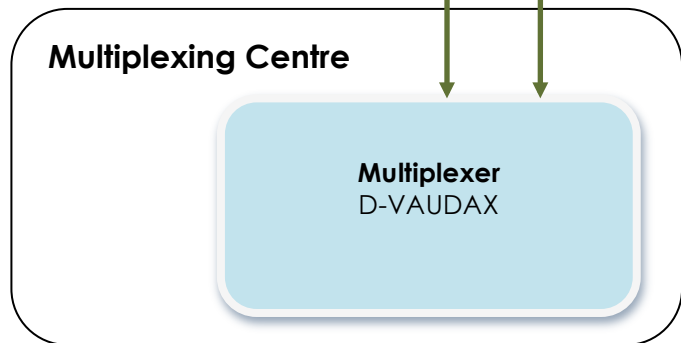
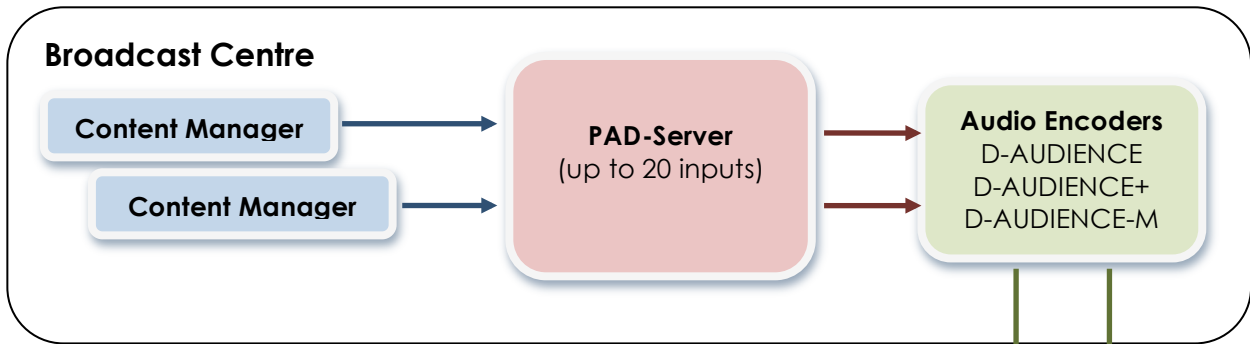
As an alternative to VDL's Multiplexer internal PAD Insertion option, the use of an external PAD-Server can provide greater flexibility with system configurations

A PAD-Server will normally be co-located with one or more audio encoders, which can typically be at the Multiplexer site, Broadcast Centre or Studio.

For applications where the Audio Encoders are not co-located with the Ensemble Multiplexer, the PAD-Server can be used to minimise network traffic by eliminating the need to insert the PAD data via the Multiplexer.

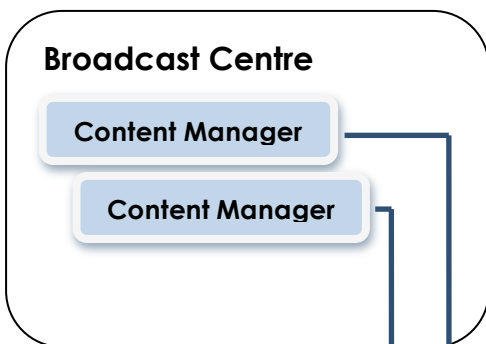
PAD Services are configured via an easy-to-use graphical user interface.

Options include UECP UDP input for insertion of up to 20 DLS and DLPlus services; software for remote control under Windows OS and an API (SOAP).



## Example PAD-Server Application

Audio Encoders and PAD-Server at the Service Provider site



## Example PAD-Server Application

Audio Encoders and PAD-Server at the Multiplexing Centre

